



Nature's Best LLC

Products For All Crops

Manufacturers & Distributors of Organic &
Sustainable Livestock Products since 1986.

Nature's Best L.L.C.

311 S Main St.
Inwood, IA 51240
Office: 712-753-4651
Fax: 712-753-4650
Cell: 605-370-2249

find us on



Nature's Best Ag Services LLC

1600 Railroad Avenue
Albany, MN 56307
Office: 320-845-4122
Fax: 320-845-4126

naturesbest@alliancecom.net

www.NaturesBestLLCSupply.com

The Quality of Yesteryear with the Technology of Today

Nature's Best strives daily to meet the needs of an ever changing agricultural market with the best intentions of the earth and its power. We innovate, design, develop, and manufacture products in house that keep the farmer at the cutting edge of productivity, while not depleting the soil, water, nor air in which provides our yield, health, and earthly home.

About Us

Nature's Best was founded in 1986 in Inwood, IA by Roger TeSlaa. Roger, while partnered with J.R. Hovlsrude from Lincoln, NE; started mixing vitamins and trace minerals for small private entities and large hog farmers. J.R. worked out of Lincoln, NE producing and exporting aquaculture vitamins and trace mineral products for companies in Taiwan. Roger, in the Inwood location served the in-states vitamin and trace mineral needs, all products were produced in house at Nature's Best.

In 1991, a customer of J.R.s, named Clifford Willis, was introduced to Roger to formulate some of Clifford's premix ideas under the name CW Products. Clifford placed orders and formulas and Roger produced them. Clifford, a former graduate and instructor at Iowa State's agriculture department had many innovative and exciting ideas. Roger and Clifford became great friends. Together they started looking at Livestock and Crop problems from a different perspective. Clifford once said "You can put a Band-Aid on a livestock problem with nutrition, but you will not fix the problem until you fix the soil". And the journey into the soil for Roger and Clifford began.

In 2001, Roger bought out J.R.s interest of Natures Best. Sadly, a few short months later J.R. passed away. His drive for business, ideas, and his friendship will be forever missed.

By this time, Clifford and Rogers out of the box ideas led to the transformation of Nature's Best from a livestock vitamins and trace minerals business, into a full line agriculture company.

Although Nature's Best backbone of mixing vitamins and trace mineral premixes are still very much alive. Huge strides have been accomplished in the crop and soil side of the company. With the addition of the CW Products line in 2006 and a custom dry fertilizer plant in Albany, MN in 2012, along with Natures Bests line of foliar, soil amendments, biologicals, and seed.

Sadly, on January 9th of 2015, Clifford Willis passed away. Clifford's ideas, designs, formulations, drive, humor, advice, morals, vanity, and friendship are irreplaceable. Clifford will be truly missed.

Nature's Best continues to grow and make strides towards the new frontier of farming technologies while never forgetting what got us this far.



Dear Friends & Customers

For over 35 years, Nature's Best has helped farmers from all aspects of agriculture provide the healthiest environment to their soil, livestock, crops, foods, and to themselves. Nature's Best goal is to incorporate sustainable, holistic, ecologically friendly examples. Using time tested methods to analyze, interpret, and treat problems without hasty decision making, while keeping the best intentions of our earth and her environment in mind. Our "journey into the soil" has only just begun, although we have learned so much from the earth thus far, we must never underestimate the magnitude of her power.

Nature's Best strives daily to be your most valuable tool in the toolbox.

*** Organic**

The “Organic” banner you will find throughout the catalog denotes that the product is available organically. Check with your certifier for specific ingredient approvals, NOP standards, and OMRI regulations.

Table of Contents

Magnetic & Frequency Technology	5
Seed	6
Foliars	7-8
Seed Treats	9-10
Crop, Silage, & Compost Biologicals	11-12
Soil Microbes	13
Dry Fertilizers	14-16
Mist Blowers	17-18
Other Products	19
Meet the Team	20-21
Spam Conference	22
Field Day / Delivery	23

Energy & Frequency Technology



The "Enagizer"

A device which aligns the hydrogen ions of any product that passed through its field. It increases the vitality and potential in water, fuel, fertilizer, seed, and feed. The possibilities are endless!

The "Gits-It"

This device is the mobile version of the energy technology, it provides a quick and easy way to "Enagize" your products.



Nature's Best Carbon Filter

Designed with 3/4 in. garden hose ends, using activated carbon, the Nature's Best Carbon Filter is a quick and easy to use water filter for spray water where less desirable water conditions are present.

Water Structuring Devices

These devices are silica glass spheres which hold a frequency aligned in such a way that when fluid is passed by, a vortex is created thus clearing the memory of the water (breaking apart molecules with opposite fields) therefore dropping off the pollutants which are held on through the trip. Similar to water crashing over rocks down a stream.



Full Line Seed Dealers



Nature's Best is a full line seed dealer carrying seed corn, soybean, and cover crop seeds, just to name a few.

Nature's Best carries a very good line of seeds from Miller Hybrids and Byron Seeds.

We have a prepay program that runs from mid September until early January. The earlier you order, the greater the savings are for you. Please call if you have any questions.

*** Organic**

CW FOLIAR - A Trace Mineral Plant Stimulant Designed For Plant Leaf Uptake Using A Fine Mist

Guaranteed Analysis

Copper (Cu).....	0.4%
Iron (Fe).....	0.4%
Manganese (Mn)	0.4%
Zinc (Zn)	0.4%

Ingredients:

Copper Sulfate, Zinc Sulfate, Manganese Sulfate, Ferrous Sulfate, Organic Molasses, and Distilled Water.

For Custom Application Only:

Rate of Application: One (1) gallon of CW Foliar to 72 acres.

Directions for Mixing:

Mix one (1) gallon of CW Foliar to 71 gallons of water - Apply one gallon total solution per acre. pH of water should be 6.8 - 6.9. Use Lactic Acid to lower pH and Sodium Bicarbonate to raise pH. Water should be magnetically treated according to company recommendations. DO NOT MIX WITH ANY OTHER PRODUCTS OR SURFACTANTS.

NOTE:

CW Foliar should be applied with Mist Blower or Airplane - Any sprayer that will apply one gallon per acre as a mist can be used. DO NOT spray when dew is on leaves or temperature is less than 45 degrees F or over 95 degrees F. Broadcast apply - do not band apply.

- Apply on Wheat, Oats, Barley, Rye, Legumes, and Pastures when there is 3-4 inches of growth.
- Apply on Corn and Milo when there is 6 inches or more of growth.
- Apply on other crops when the ground area is covered with crop growing.

One Application Per Crop Produced

*** Organic**

HVR FOLIAR - This is NOT a Fertility Product

Ingredients:

Structured Filtered Water, Organic Cane Molasses, Aquatic Plant Products (Organic Kelp), Copper Sulfate, Zinc Sulfate, Manganese Sulfate, Iron Sulfate, Magnesium Sulfate, Potassium Sulfate, Cobalt Carbonate, Boric Acid, Fulvic Acid, Citric Acid, Thiamine Hydrochloride (Source of Vitamin B1).

1 Gallon per 20 acres of growing crop or approximately 8 oz by weight 50# per 100 acres of growing crop.

Directions For Use:

Mix 8 oz. HVR Foliar with 5-20 gallons of water and apply as a fine mist pre acre of crop. For use in a foliar feeding only.

When to apply: When plants are actively growing.



*** Organic**

NB 202 - A Plant Foliar Designed To Eradicate Fungal Infestations In Growing Crops Using Beneficial Bacteria & Fungi

Guaranteed Analysis

N	0.35%
P	0.15%
K	0.65%
Inert Ingredients	98.85%

Ingredients:

Filtered and Structured Water, Organic Molasses, Organic Wheat Bran, Organic Seaweed Powder, Sea Salt, Botanical Extracts, Microbial Fermentation Extracts, Ascorbic Acid (Vitamin C), Azomite, Organic Liquid Fish, and Activated Charcoal

Directions For Use:

42.5 oz per acre by weight. For other application rates and timing, contact a Nature's Best Sales Representative.

Optional Usage:

Can be mixed with liquid starters, side dress, or foliar feeds. **DO NOT MIX WITH CHEMICALS.** Can be mixed for mist blower applications, or air plane at 1 ½ gal/ ac to mist surface areas of trees, vegetables, plants, ornamentals or others. Do not let product run off leaves.

*** Organic**

NB 303 - A Plant Leaf Foliar Designed To Raise Your Growing Plant Brix To A Susceptible Level To Resist Insect Infestations

Guaranteed Analysis

Copper (Cu)	0.45%
Manganese (Mn)	0.18%
Zinc (Zn)	0.20%

Ingredients:

Organic Cane Molasses, Fermented Organic Cane Molasses, Copper Sulfate, Manganese Sulfate, Zinc Sulfate, Cobalt Carbonate, Thiamine Hydrochloride, and Citric Acid.

Directions For Use:

Use at the rate of 8 oz per acre in conjunction with 1 to 2 oz of CW Foliar Spray Concentrate per acre. Mix with 1 to 1 ¼ gallons of water per acre. Apply with a fine mist for the use of improving plant health. This container will treat 72 acres.

*** Organic**

SEED TREAT SOYBEANS

Ingredients:

Filtered Water, Organic Cane Molasses, Seaweed Powder, Calcium Carbonate, Glomus Mosseae, Glomus Intaraices, Glomus Aggregatum, and Glomus Ethnicatum, Glomus deserticola, Glomus clarum, Glomus monosporum, Paraglomus brasilanum, Gigaspora margarita, Bradyhizobium Japonicum, Azospirillum Brazilense, Lactic Acid producing blend (Lactobacillus Acidophilus, Lactobacillus Bulgaricus, Lactobacillus Lactis, Asperguills Oryzae) grown on a media of Organic Milk, Copper Sulfate, Zinc Sulfate, and Boron

Directions For Use:

Spray or Apply 3 oz of Nature's Best Seed Treat SB per unit (50#) of soybean seed. Blend on seed 2 hours to 30 days prior to planting. Or may be applied at the same rate as above in-furrow, on top of, or beside seed. **Store In A Cool Place.**

Shake Well Before Using

*** Organic**

SEED TREAT CORN

Ingredients:

Filtered Water, Organic Cane Molasses, Seaweed Powder, Calcium Carbonate, Glomus Mosseae, Glomus Intaradices, Glomus Aggregatum, and Glomus Ethnicatum, Glomus deserticola, Glomus clarum, Glomus monosporum, Paraglomus brasilanum, Gigaspora margarita, Azospirillum lipoferum, Azospirillum brasilense, Lactic Acid producing blend (Lactobacillus Acidophilus, Lactobacillus Bulgarius, Lactobacillus Lactis, Aspergillus Oryzae) Grown on a media of organic Milk, and Copper Sulfate, Zinc Sulfate, and Boron

Directions For Use:

Spray or Apply 6 oz of Nature's Best Seed Treat CN per 80,000 kernels of corn seed. Blend on seed 2 hours to 60 days prior to planting. Or may be applied at the same rate as above in-furrow, on top of, or beside seed. Or 1 Gallon per 60 acres of corn. **Store In A Cool Place.**

Shake Well Before Using

*** Organic**

PREMIUM SEED TREAT PLUS

Guaranteed Analysis

Potassium (K).....	4.0%
Calcium (Ca).....	6.0%
Sulfur (S)	2.0%
Magnesium (Mg).....	0.3%

Equipment Recommended:

For best results, premix with seed in a small electric concrete mixer, or other mixing device. Can also be put directly into planter boxes or drill.

Directions For Use:

Apply 1/2 pound per acre, dry, premixed or in planter box. Can also apply on top of seed, or beside seed.

Derived From:

Mined Calcium Carbonate, Mined Potassium Sulfate, Magnesium Sulfate, Sulfur, Reed Sledge Peet, Fulvic Acid, Glomus intradices, Glomus aggregatum, Glomus mosseae, Glomus etunicatum, Glomus deserticola, Glomas clarum, Glomus monosporum, Paraglomus brasilanum, Gigaspora margarita.

* Organic

KERNEL POD FILL - A Foliar Designed To Move Sugars and Nutrients From Roots, Stems, and Leaves Into Fruit Production During Dry Down

Guaranteed Analysis

Potassium	0.50%
Copper (Cu)	0.04%
Manganese (Mn)	0.04%
Zinc (Zn)	0.04%

Ingredients:

Organic Cane Molasses, Structured Water, Copper Sulfate, Zinc Sulfate, Solution Grade Potassium Sulfate, Manganese Sulfate, Ferrous Sulfate, Mined Calcium Carbonate, Mined Potassium Sulfate, and Amino Acids

Directions For Use:

Blend 1 pound (by weight) Kernel Pod Fill with 1-1 1/2 Gallons company treated water per acre and apply with airplane or a very fine mist.

When To Apply:

Corn: When tassel is in swirl to after tassel

Beans: Apply when beans are in the last quarter of bloom or when pods are set. Contact your Nature's Best Representative to acquire treated application water.

* Organic

VRP-4 - A Plant and Soil Stimulant Designed For Water Drainage In Low, Alkali, and Gumbo Type Soils

Guaranteed Analysis

Copper	0.18%
Iron (Fe)	0.18%
Manganese (Min)	0.18%
Zinc (Zn)	0.18%

Ingredients:

Structured water, Copper Sulfate, Zinc Sulfate, Manganese Sulfate, Ferrous Sulfate, Cobalt Carbonate, Organic Cane Molasses, Citric Acid.

Directions For Mixing:

Mix one (1) bucket (40lbs) of VRP-4 to 155 gallons of water. Apply one gallon total solution per acre. pH of water should be 6.5-6.8. Use Lactic Acid to lower pH and Sodium Bicarbonate to raise pH. Water should be magnetically treated according to company recommendations.

Directions For Use:

For Custom Application Only: Rate of application - One (1) 40lb. pail of VRP-4 with one (1) gallon of water to 160 acres. VRP-4 should be applied with mist blower or airplane - any sprayer that will apply one gallon per acre as a mist can be used. DO NOT spray when dew is on leaves or temperature is less than 45 degree F or over 95 degree F.

Broadcast apply - do not band apply:

Apply on Wheat, Oats, Barley, Rye, Legumes and Pastures when there is 1-4 inches of growth. Apply on Corn and Milo when there is 2-24 inches of growth. Apply on other crops when 1/4 or 1/3 of ground area is covered with crop growing.

*** Organic**

RE-N-VEST - A Blend of Microbes Designed To Aid In The Microbial Decomposition of Crop Residue

Guaranteed Analysis

Bacillus Subtilis 1.40x10⁶th CFU/ML
Rhodopseudomonas 1.2x10⁶th CFU/ML
As Rhodopseudomonas Palustris,
Rhodobacter Sphaeroides.
Manganese (Mn) as derived from
Manganese Sulfate 0.15%
Sulfur (S)..... 0.40%

Ingredients:

Filtered and Structured Water, Organic
Blackstrap Molasses, Organic Seaweed
Powder, Organic Wheat Bran, Sea Salt,
Manganese Sulfate, Ascorbic Acid (Vitamin
C), Azomite, Organic Liquid Fish, Carbonate,
Sea Water, Elemental Sulfur, Humic Acid
(Starter Cultures of Bacillus Subtilis, and
Rhodopseudomonas Palustris)

Directions For Use:

Mix 2 qts. of Re-N-Vest with 5-6 pounds water soluble ammonium sulfate or 1 gal.
of fish solubles along with as much water as possible (i.e. 15 to 20 gal per acre).
Incorporate lightly into the soil if possible.

*** Organic**

N-BISTRO - Humus Friendly, Nitrogen Donating Microbes For Leguminous Crops

Guaranteed Analysis

Azotobacter Chroococcum 2.10 x 100 CFU
Azospirillum Lipoferum 1.60 x 100 CFU

Ingredients:

Microorganisms 1.5%
Water Based Carrier 98.5%
Organic Molasses, Organic Kelp, Organic
Wheat Bran, Sea Salt, Azotobacter
Chroococcum, Azospirillum Lipoferum
Cultures.

Directions For Use:

Use 12.5 fl. oz. in liquid starter tank fertilizer mix at time of planting.
Use jar test to insure product compatibility!



*** Organic**

CW 101 - A Microbial Blend Designed for Hay and Silage Fermentation

Guaranteed Analysis

Lactobacillus Acidophilus..... 26 billion CFU per pound

Ingredients:

Organic Cane Molasses, Lactobacillus Acidophilus cultures (grown on organic milk), filtered water, and Citric Acid.

Mixing Instructions:

Mix the contents of this container (50lbs.) into 45 gallons of clean water (375 lbs.) to make a diluted mix and apply at the following rate or use undiluted.

Diluted Mix:

3 lbs./ton High Moisture Corn
3 lbs./ton Grass or Hay Silage
2 lbs./ton Corn Silage
2 lbs./ton Straw or Corn Stalks

Undiluted Mix:

6 oz/ton
6 oz/ton
4 oz/ton
4 oz/ton

Hay (baling or stacking)

15-18% moisture.....4oz/ton
18-20% moisture.....6oz/ton
23% +8oz/ton

NOTE:

This product was made in a feed manufacturing facility that does not handle or store products containing animal proteins prohibited in ruminant feed.

*** Organic**

Compost-O-Mizer - A Microbial Blend To Aid In Decomposition Of Carbon Based Products

Guaranteed Analysis

Bacillus Subtilis..... 1.4 x 10⁶ CFU/mL

Rhodopseudomonas1.2 x 10⁶ CFU/mL

As Rhodopseudomonas Palustris, Rhodobacter

Sphaeroides:

Manganese (Mn) as derived from Manganese

Sulfate0.18%

Sulfur (S)0.4%

Ingredients:

Filtered Water, Organic Molasses, Organic Seaweed Powder, Reed Sledge Peat, Sea-Salt, Manganese Sulfate, Organic Liquid Fish, Starter Culture of Bacillus Subtilis, and Rhodopseudomonas Palustris.

Directions For Use:

Store in Cool Place. Do Not allow to Freeze. Mix minimum of 0.1 gal. (12.8 oz.) of Compost-O-Mizer with enough water to Apply to One (1) Ton of material to be composted. Mix Thoroughly. Turn and mix compost pile at Least Once per week until composting process is completed. For futher directions, contact your Nature's Best representative.



*** Organic**

PAM & SAM - Par-A-Magnetic / Synergistic-Anaerobic-Microbes

To improve physical quality of soil to provide nutrients for the soil

Guaranteed Analysis

Active Ingredients..... 1.5%
Inert Ingredients 98.5%
Bacterial spp 4.16×10^7

Ingredients:

Filtered and Structured Water, Organic Blackstrap Molasses, Organic Wheat Bran, Organic Seaweed Powder, Organic Kelp, Sea Salt, Ascorbic Acid (Vitamin C), Azomite, Organic Liquid Fish, Carbonite

Directions For Soil Application:

For a planting fertilizer mix, side-dressing, and for broadcast spray, mix one gallon PAM & SAM (and optionally also one gallon preservative-free blackstrap molasses) with as much water as is possible or convenient to carry on the applicator. Use 1 gallon of Pam & Sam to treat 4 to 10 acres during fertigation. Use 1 qt. applied directly to soil for high alkali soils. Use 1 qt. in furrow at planting for microbial activity during germination. Or use 1 pt. to 1 qt. on direct soil or foliar applications.

**Nature's Best Pam & Sam
is the growers solution to
success! The overall key to
livestock & soil health
begins with microbes.**

www.NaturesBestLLCSupply.com



PELLETED CHICKEN MANURE 4-4.5-3.5

Nature's Best Pelleted Chicken Manure is fully composted, ensuring all weed seeds and GMO contaminants have been eradicated before the steam palletization process begins.

It is a great source of N, P, and K and easy to haul and spread.

Guaranteed Analysis

Ammoniacal Nitrogen	3.62%
Nitrate Nitrogen	0.01%
Water Soluble Nitrogen	3.62%
Phosphorus P205	4.67%
Potassium K20	3.48%
Calcium (Ca)	12.20%
Magnesium (Mg)	0.58%
Sulfur (S).....	0.55%
Copper (Cu)	71 ppm
Iron (Fe)	520 ppm
Manganese (Mn)	490 ppm
Sodium (Na)	0.31%
Zinc (Zn)	442 ppm
Soluble Salts mmho/cm	10.7
pH.....	7.7
Dry Matter%	91.4%

Application Directions:

Apply as directed based on soil sample requirements.

NB-DSP - A Pit & Lagoon Solids Digester

Ingredients:

Ground Limestone, Dolomitic Limestone, Organic Molasses, Organic Wheat Bran, Organic Seaweed Powder, Sea Salt, Organic Kelp, Azomite, Organic Liquid Fish, Ascorbic Acid, Elemental Sulfur, Humic Acid, Manganese Sulfate, Magnesium Oxide, Basic enzymes of A. Oryzae, Amylase, Lactase, Maltase, Protease, Lipase, Alpha & Beta Glucosidase. Lactobacillus Acidophilus, Lactobacillus Bulgarius, Lactobacillus Lactis, and Aspergillus Oryzae.

Directions For Use:

Use 1- 40 lb pail of Nature's Best DSP in the barn drain, 1st stage of manure holding pit, or directly into the lagoon. 1 - 40 lb pail treats 500,000 gallons of manure.



*** Organic**

Organic Cane Molasses

Guaranteed Analysis

pH	5.0 - 6.5
Brix, %	74.0 - 76.0
Dry Matter	75% Min
Moisture	25% Max

Ingredients:

Organic Sugar Cane Molasses, Water,
*no additional additives

Molasses Benefits:

Naturally increases animal energy. Molasses can act as a catalyst for dairy cows to increase milk production. Molasses also helps strengthen the overall bone structure of livestock and helps increase weight gain for cattle. Molasses Usage is flexible. Fortifying molasses with additional proteins (such as urea and vegetable protein meal), will ensure that the feed mixture is well balanced. Amounts will depend on the condition of the livestock.

Storage:

Recommended handling and storage temperature for molasses and molasses blends is between 50°F and 75°F. Best results are obtained if conditions of temperature and humidity are reasonably constant.

*** Organic**

Organic Gem Fish Fertilizer

Guaranteed Analysis

Total Nitrogen (N)	2.9%
Ammoniacal Nitrogen	0.4%
Nitrate Nitrogen	0.0%
Urea Nitrogen (Naturally Occurring from fish)	0.5%
Water Insoluble Nitrogen	0.4%
Available Phosphate (P205)	3.5%
Soluble Potash (K20)	0.3%

Ingredients:

Derived from: Fish Hydrolysate, Stabilized with Phosphoric Acid. Fish have been used hundreds of years. Native Americans first demonstrated how to use fish to grow vigorous & more bountiful crops. Organic Gem promotes nutrient healthy crops & the vigorous growth of plants & vegetables.

Mixing Directions (MUST BE DILUTED IN WATER):

Do not store in diluted form. Thoroughly clean all equipment after use.

FOR PLANTS: Mix 1-2 oz. of Organic Gem per gallon of water. Apply generously to soil or foliage until leaves are wet top & bottom. Feed every 2 weeks.

FOR LAWNS: Mix 2 oz. of Organic Gem per gallon of water. Feed every 2 weeks.
One gallon of undiluted Organic Gem will cover 1 acre.

ORGANIC ROCK STAR - Dry Fertilizer Blend for Alfalfa

Guaranteed Analysis

N (Derived from Fish Meal)	2.0%
P (Derived from Soft Rock Phosphate)	5.3%
K (Derived from Sulfate of Potash).....	7.0%
Ca (Derived from Gypsum & Soft Rock Phosphate)	7.2%
S (Derived from Gypsum & Sulfate of Potash).....	2.5%

Ingredients:

Fish Meal, Humic Shale, Soft Rock Phosphate, Potash, Gypsum, Sulfate of Potash, Sodium Borate, and Manganese Sulfate.

Application:

Broadcast at 250 Pounds per Acre.

NON ORGANIC ROCK STAR - Dry Fertilizer Blend for Alfalfa

Guaranteed Analysis

N (Derived from Ammonium Sulfate).....	3.0%
P (Derived from Soft Rock Phosphate)	5.3%
K (Derived from Potash).....	7.0%
Ca (Derived from Gypsum & Soft Rock Phosphate)	7.2%
S (Derived from Ammonium Sulfate, Gypsum & Potash) ..	5.5%

Ingredients:

Ammonium Sulfate, Humic Shale, Soft Rock Phosphate, Gypsum, Potash, Boronic Acid, and Manganese Sulfate.

Application:

Broadcast at 250 Pounds per Acre.

NB All Crop Starter- Crop & Soil Friendly Corn Starter

Guaranteed Analysis

3-15-5.5-2S

Zero salt, Crop and Soil Friendly Product for In Furrow Use. Does not follow the fertilizer market.



HUMIC SOIL PRODUCTS

Improve Soil Health • Increase Nutrient Uptake • Economical Organic Solutions

LIQUID CARBON HC 12 OMRI Listed

Black Earth Liquid Carbon HC 12 is a concentrated extracted humic liquid acid. Containing 5.3% humic acid (HPTA method), Liquid Carbon HC 12 is a highly concentrated liquid that can be easily diluted to desired levels and is ideal for starter fertilizer applications, top dressings, injection through irrigation water, and foliar applications. This liquid humic shows proven results as a stand alone conditioner and for dry fertilizer impregnation.

Available in 2.5 Gallon, 5 Gallon, and 265 Gallon Sizes. Weighs 8.5 Pounds per Gallon.

HUMIZEN ALPHA PLUS OMRI Listed

Humizen Alpha Plus is derived from humalite, a highly concentrated source of humic acid found only in Alberta, Canada. Humalite contains a unique profile of functional carbon groups, unmatched by other source materials.

The extraction method used to produce Alpha Plus isolates the fulvic acids and most bioactive humic acids contained within this unique source material. The result is a potent liquid humate that will give your crop the boost it needs.

Available in 2.5 Gallon, 5 Gallon, and 265 Gallon Sizes. Weighs 8.75 Pounds per Gallon.

HUMALITE GG16 FINE POWDER OMRI Listed

Black Earth Humalite GG16 is an organic, fine grade humic granule, containing 64% humic acid (HPTA method). The fine grade particle size allows for increased surface area which allows the particles to degrade and quickly creates a greater nutrient availability to the plant.

Ideal for broadcast, or in furrow, applications. Humalite GG16 Fine Powder enables users to apply material directly to the soil or mix with a substrate. Humalite GG16 Fine Powder has limited blending capabilities.

Humalite GG16 Fine Powder can also be used in manufacturing applications.

Available in 2400, 2000, and 55 Pound Sizes.

HUMIZEN MAGNA PLUS OMRI Listed

Humizen Magna Plus is derived from humalite, a highly concentrated source of humic acid found only in Alberta, Canada. Humalite contains a unique profile of functional carbon groups, unmatched by other source materials. Magna Plus is a revolutionary humic-fulvic product delivering the unique properties of humalite in a durable-fertilizer compatible granule, partially solubilized for rapid release and availability to any soil type.

Available in 2000 and 50 Pound Sizes.





Nature's Best LLC

NATURE'S BEST, LLC
305 South Main Street
Inwood, IA 51240
712.753.4651 605.370.2249

March 12, 2021

This information is from ACRES RESEARCH, Cedar Falls, IA:

This is an average taken off of three farms near Cedar Falls, Waterloo and Denver, Iowa in 2020.

TEST	Yield	Cost	Return @ \$5 Corn/AC
CONTROL CORN:	191 BU/AC	\$0	\$0
PAM & SAM, 12 oz in furrow	199 BU/AC	\$2.80 per acre	+\$40
PAM & SAM, 12oz and 8oz Group 1 CA 8oz Group 1 CA at V5 Foliar	214 BU/AC	\$3.50 per acre	+\$115
PAM & SAM 12 oz and 2 oz NB CAL MAG In furrow at planting	201 BU/AC	\$4.80 per acre	+\$50
CONTROL CORN:	208.9 BU/AC	\$0	\$0
NB RE-N-VEST; ½ GAL/ACRE	217.1 BU/AC	\$9.00	+\$32
CONTROL SOYBEANS:	68.3 BU/AC	\$0	(RETURN AT \$14/BU SOYBEANS)
NB RE-N-VEST; ½ GAL/ACRE	69.6	\$9	+\$9.20

ACRES Research Director: Bert Schou

Study Director: Roger Te Slaa

Nature's Best Ag Services LLC

Koch Bros Super U 46-0-0 • Bio Basics 0-5-0-11 Ca
Rock Star Alfalfa Blend • 11-52-0 • 0-0-50 • 0-0-60
Miloganite Gypsum • and More!

We Custom Blend To Fit Your Needs!

Sustainable, Conventional & Organic

Custom Mix Fertilization

Soil Friendly • Low Salt Fertilizers

Dry & Liquid Starters • Mined Ag Lime • Humates

*We Can Blend Any Fertilizer Formulation To Balance
Your Soil And Encourage Biological Activity!*

Fertilizer for the 22nd Century!

Bio Phos 0-5-0

Guaranteed Analysis

Available Phosphate (P205)	5.00%
Calcium (Ca).....	7.00%
Sulfur (S)	2.00%
Iron (Fe).....	1.70%

Derived From:

Humic Shale, Soft Rock
Phosphate. Also Contains:
(Non-Plant Food Ingredient)
29.5% Humic Acid Derived From
Humic Shale

Directions For Use:

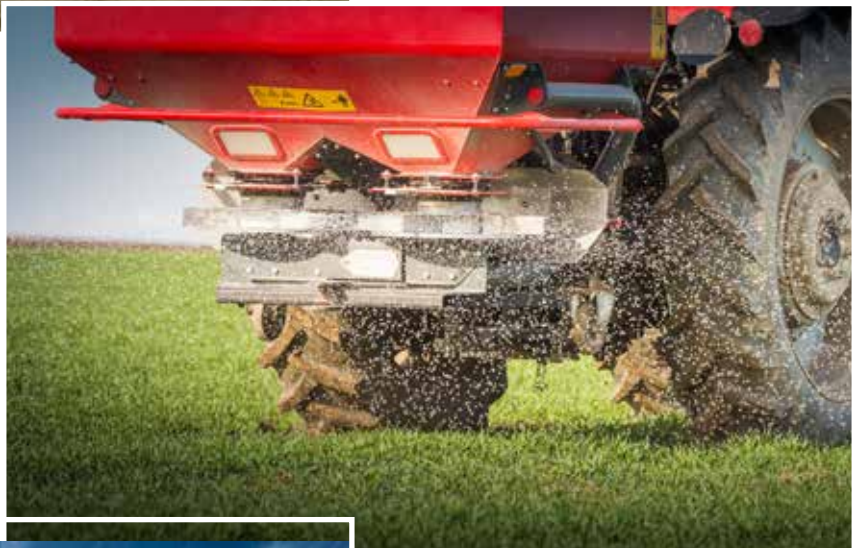
250-500 pounds per acre. May be applied over the top or
incorporated into the soil.

NATURE'S BEST AG SERVICE LLC



- 11 Bin Facility
- 8 Ton Mixer
- Conditioner & Vibrating Bagger

- Broadcast Carts
- Tender Trucks
- Bulk, 1 Ton Super Sacks & 50 lb Bags



- Dry Custom Fertilizer Blends
- In-Furrow Liquid Fertilizer Blends Per Soil Sample Requirements

WHY MIST BLOWERS?

Nature's Best prefers using mist blowers for numerous reasons. Clifford Willis once said, "if you can achieve the same results on an acre of ground with 2oz. of product, why would we use 2 gallons?" With Nature's Best product line you can achieve exactly that! Less equipment, less product, less carrier water, while achieving the same end result. If we can break down the carrier water we use for foliar into small enough (H₂O) particles, while adding a polarity to the foliar we can get up to 40% more plant uptake using 90% less product! Its hard to believe, but we continue to prove it over and over again. Mist blowers work well in so many situations! Foliar spraying your trees or orchards, your gardens or pastures. Its works great for fly spraying your cattle yard. And it works well in row crop situations. Wouldn't it be nice to put 100 gallons in the tank and be able to cover 100 acres of ground! You can do it. Contact your Nature's Best representative for more information.

Northern Ag Mist Sprayer



Nature's Best
is a dealer and distributor of Northern Ag mist blowers!
We also do custom applications with tractor, truck or ATV!

Other Products & Services

Our Annual Field Day

We are much more than just a livestock vitamin & trace mineral premix company! We offer a full line of organic and conventional soil and crop health amendments. We have a full line dry fertilizer plant, and produce numerous custom fertilizer blends, (dry or liquid). Foliar sprays, soil biologicals, compost, livestock band-aid products, as well as supplies and advice! From soil and compost thermometers and probes to mist blowers and mineral feeders. Soil, manure, tissue, humus testing, as well as custom applications! Give us a call, or stop in.



The Enagizer is a device which aligns the hydrogen ions of any product that passed through its field. It increases the vitality and potential in water, fuel, fertilizer, seed, and feed. The possibilities are endless!



Nature's Best provides testing services such as: Soil Testing, Soil washes, Humus tests, tissue tests, and more.

- Sap Extractor
- Refractometers

- Enagizer

- Soil & Crop Microbial Products

- Free Choice Mineral Feeders



Full line seed dealer, carrying seed corn, soybeans, small grains, cover crops seed, pasture and grass blends, and much more! "Enagizers" for seed, feed, and water along with water filtration and water structuring units.



Nature's Best LLC

Nature's Best, LLC is always looking for new ways to learn from and educate one another. Please consider joining us at our Annual Events:

S.P.A.M. Conference

Soil . Plant . Animal . Man

SPAM – Our Annual Conference is held each year the second Thursday, Friday and Saturday in March. Join us at the Inwood Community Center (103 S. Main St. Inwood, IA) for:

Exceptional Guest Speakers • Vendors • Education • Social Time

Please contact Virginia (712)363-3392 for details and booth space.

Check out our website and our facebook page! We randomly run an unadvertised special on the website and facebook page and if you mention it at the time of your order, you may be able to save some \$\$\$ on your order.

www.NaturesBestLLCSupply.com and facebook.com/NaturesBestLLC

Mark your calendar! Our Annual Field Day at the Sneller Farm is held the 3rd Thursday in August. Call for details. Also, our **PrePay Program**, begins in early November and runs through mid-January. This allows you to purchase and prepay for many of our products, including seed, specialty crop, and feed products, and save you money! We often have extra specials going on during this time, so don't hesitate to ask. If you have any questions please call Roger at (712)753-4651. He can answer all of your questions, or he will find the answer for you.

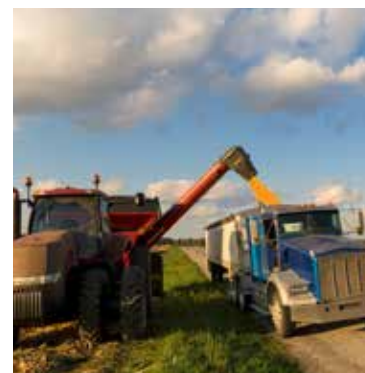



NATURE'S BEST L.L.C. ANNUAL TEST PLOT & FIELD DAY

Every year Nature's Best puts their products to the test. Field trials are the best way to find out how products hold up against the competitors and to analyze if it is doing what it is expected to do in your soil to maximize yields and profits on your farm. Whether it is a hybrid comparison, biological input calcium trial, cover crop or nitrogen fixation product, we test it out.



***Nature's Best
Pam & Sam and
Natures Best Seed Treat Corn
showed a 20+ bushel increase
over control!***



Nature's Best Annual Field Day is held on the 3rd Thursday of August each year. Location is the Sneller Farm near Doon, Iowa. Come for the day, Stay for a Steak on us! Please call, or email, for more information. 

ORDERING AND SHIPPING PROCEDURE

We ship to all 48 contiguous states. We can ship orders as small as one bag, or box; up to an entire semi trailer (22 pallets); and anything in-between. The larger the order, the less expensive the shipping cost is per unit. We find the least expensive and most efficient way to ship your order.

Step 1) Put together a list of the products and quantities your interested in.

Step 2) Call our Inwood, Iowa office at Ph. (712) 753-4651

Step 3) Information we'll need:

- **your full name**
- **mailing address**
- **shipping address (if different from mailing address)**
- **the best phone number to reach you**
- **your email address**
- **purchase order number if you require one**
- **if you have the ability to unload heavy pallets (such as a fork lift, tractor forks, loading dock, etc** - otherwise we specify that your order comes with a lift gate (self unloading) truck, for which there is an up-charge. Most freight companies can ship a skid weighing up to 2,500 pounds. You can order a variety of products to put onto the skid.

Once we have all of the above information, we will search for the most economical shipping company to ship your order. **Once we find the best rate for you, we will call, or email you, with the total cost PRIOR to shipping your order.**

YOUR ORDER WILL NOT BE SHIPPED WITHOUT YOUR CONFIRMATION. After your final approval, your order will be shipped out of our Inwood, Iowa plant, or out of our Albany, Minnesota warehouse, whichever is the most economical for you. Thank you in advance for your business. We look forward to serving you soon.

NOTICE: We are charging an extra 3-5% on all orders paid with credit cards.

(712) 753-4651 Inwood, Iowa Office

naturesbest@alliancecom.net - Inwood, Iowa location



In Memory of Clifford E. Willis 1925-2015

Clifford grew up in Marysville, MO, graduating from St. Benedict's High School in Clyde, MO in 1943. He served in the United States Marine Corps in the South Pacific from 1944 to 1946. Upon his return, Clifford attended Iowa State University graduating with a Bachelors of Science degree in Agricultural Education in 1950. In 1951, Clifford was recalled to duty with the Marine Corps during the Korean Conflict. Afterwards, Clifford taught vocational agriculture for 16 years to veterans on the GI Bill in Northeast Iowa. In 1970, Clifford started formulating feed programs, soil amendments and feed additives independently, then marketing his products to larger firms.

Clifford's lifelong journey into the health of the soil left a benchmark for agricultural products as we know them today and an everlasting impression on honest agronomy.

We Will Always Remember...

Nature's Best LLC

305 S. Main St. | PO Box 325 | Inwood, IA 51240

Office: 712.753.4651 | Fax: 712.753.4650

Email: naturesbest@alliancecom.net



Roger TeSlaa

Owner

605.370.2249 Cell



Virginia Scannell

Accts Payable. Accts Receivable. Admin

712.363.3392 Cell

Our office is open daily from 8 to 5, Monday through Friday, and on other days when needed! Roger has his phone with him at all times, so please don't hesitate to call if you have a question.

We have more products on hand than what we have listed in the catalog. If you are looking for something specific, don't hesitate to ask. We can take soil samples for analysis, we have starter fertilizer, humates, etc.

Like our mission states, Natures Best strives to meet the needs of the ever changing agricultural market.

Thank you!!

Outside Sales



Dan Uphoff
605.321.1862 Cell
South Dakota, Minnesota



Judy Majeres
712.441.6424 Cell
Northwest Iowa

Feel free to call our sales people to place an order, or if you have questions.

Our sales people are willing to stop by and visit with you at your convenience.

Give them a call!!



Doug Baade
402.266.1231 Cell
Iowa, SD, Minnesota



Will Winter
612.756.1232 Cell
Minnesota

Nature's Best Ag Services LLC

320.845.4122 1600 Railroad Ave. | Albany, MN 56307



Kim Kroshus
Fertilizer Associate
320.250.9601

Nature's Best LLC

